

Registering a Nuclearsafetysim Model to Open Using isee Player Windows XP instructions

1. Download and install isee Player, then download a simulation model from Nuclearsafetysim.com.
2. Locate and double-click on the model file. In Figure 1, the file is located on the desktop.



Figure 1

3. If the simulation model file type is not registered, Windows XP displays the dialog box shown in Figure 2. Choose "Select the program from a list" and press OK.

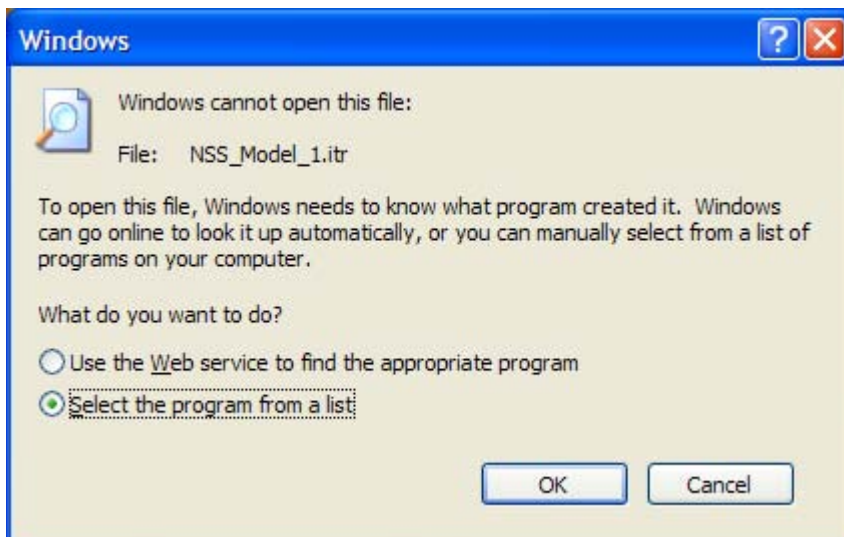


Figure 2

4. Windows XP displays the Open With dialog box. If isee Player is shown in the Programs list, as it is in Figure 3, then select it to open the file,

otherwise, click Browse to locate the program. The “Always use the selected program to open this kind of file” box should be checked.

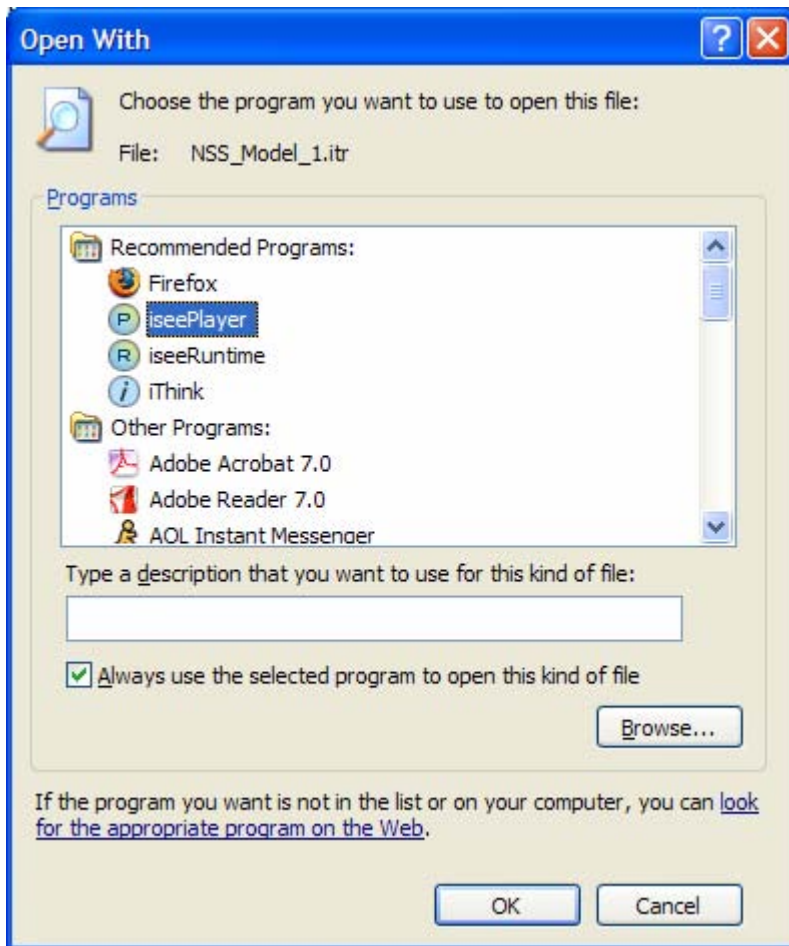


Figure 3

4. If you selected Browse, navigate to the isee Player program as shown in Figures 4-6, choose it and click Open, which returns you to the Open With dialog box.

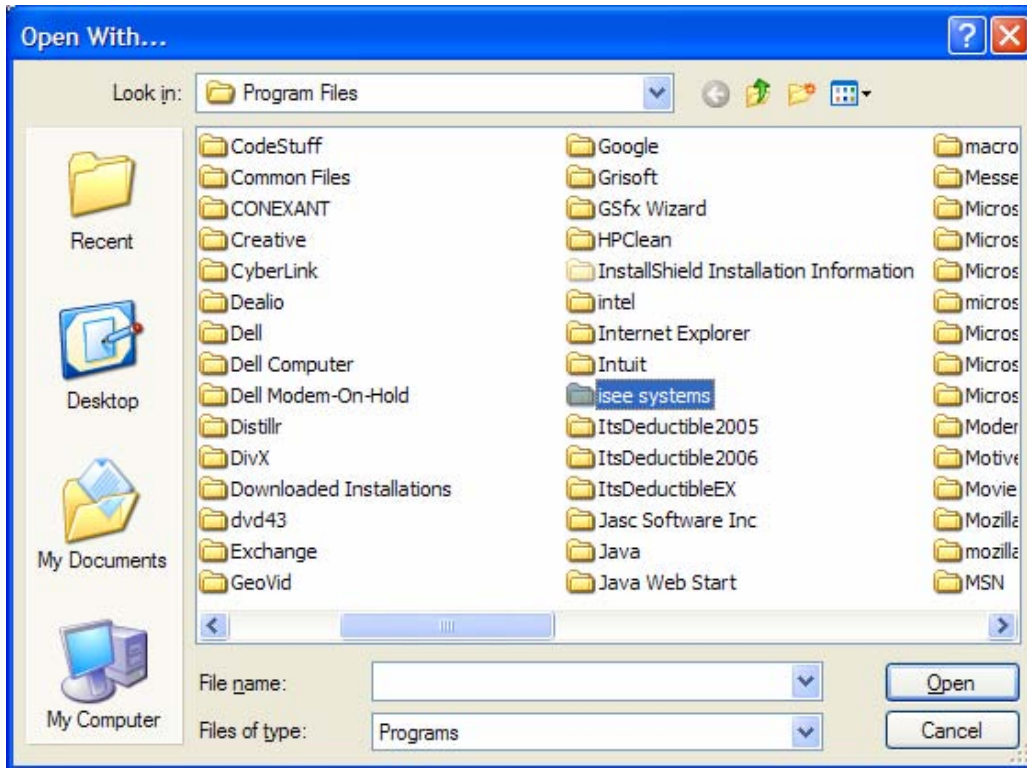


Figure 4

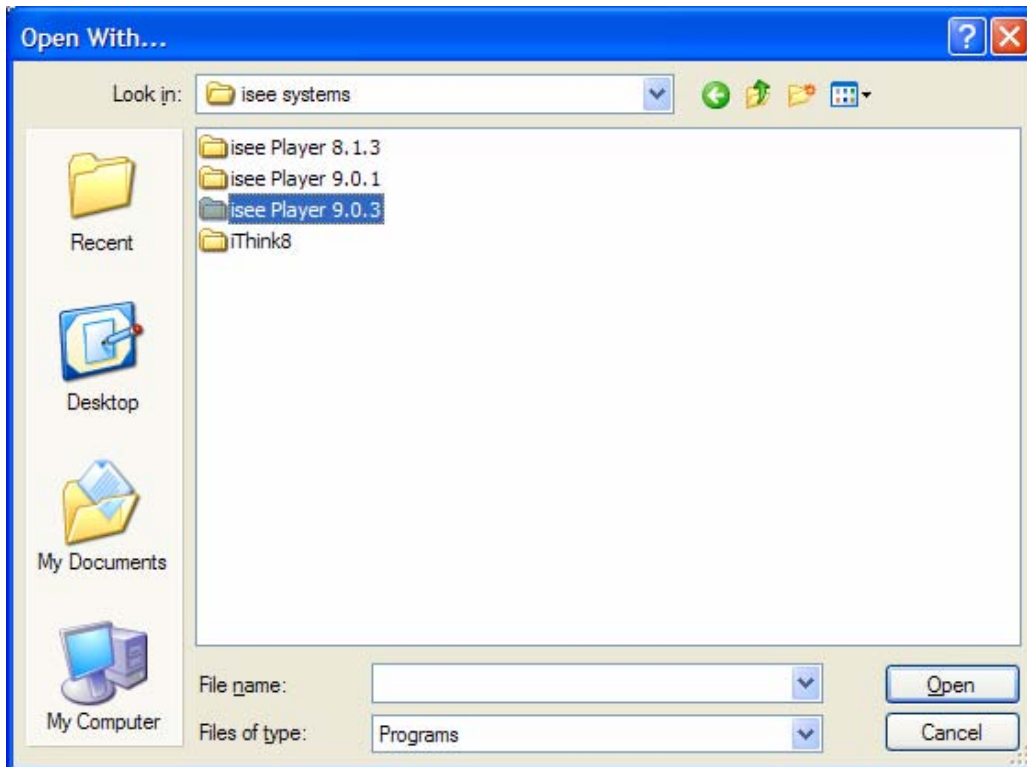


Figure 5

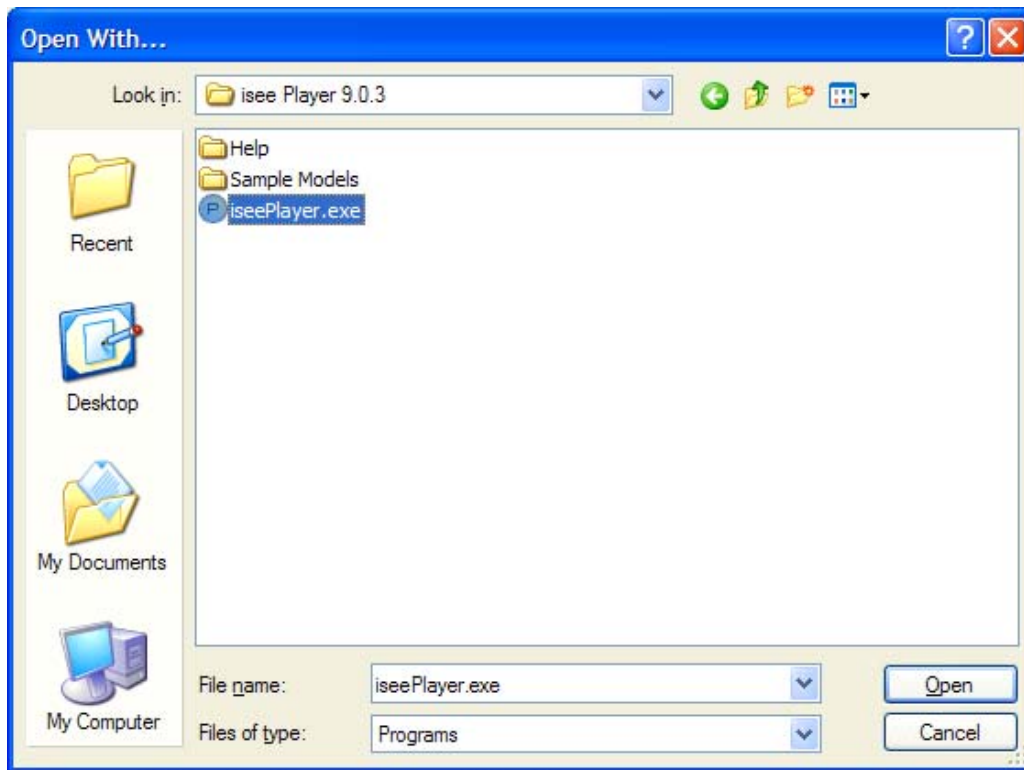


Figure 6

5. At the Open With dialog box, click OK. The simulation model file type should register and the model should open using isee Player. Models that you download in the future should open by double-clicking on them.